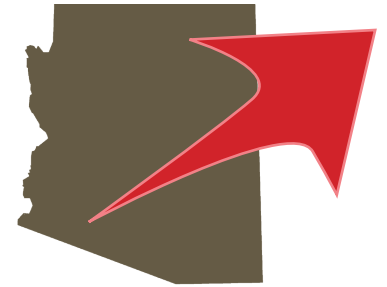


# The Biodesign Institute: Translating research into **REAL-WORLD IMPACT**

**\$291**  
MILLION



**Creating companies  
and advancing  
technologies**

## **Breezing**

The world's first mobile  
metabolism tracker

## **ARBSource**

Fast, efficient and modular  
wastewater treatment

## **Kentucky BioProcessing**

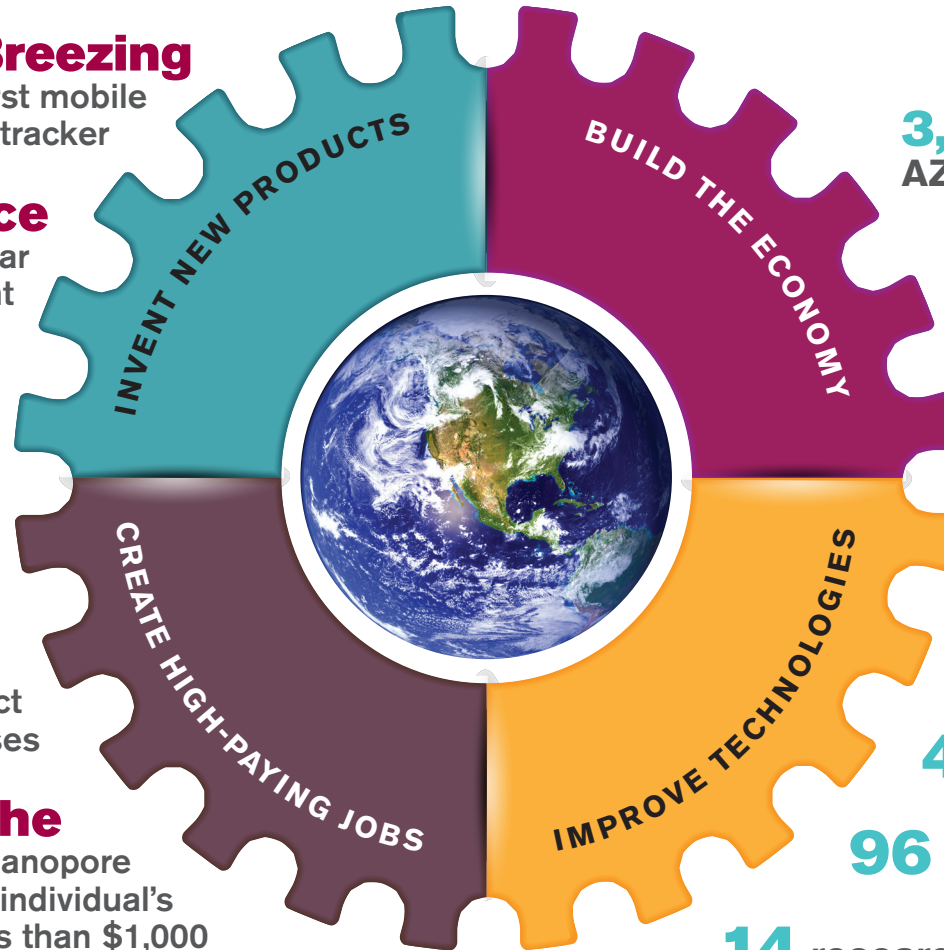
Plant-based  
pharmaceutical  
proteins, including  
Ebola treatment

## **HealthTell**

Diagnostics to detect  
cancer and other diseases

## **Roche**

Licensed **Biodesign's** nanopore  
technology to decode an individual's  
complete genome for less than \$1,000



**3,165**

AZ jobs added yearly

Annual state and  
local tax revenues

**\$24.1 MILLION**

**11** start-up companies  
& licensed technologies

**541** inventions

**42** patents

**96** diseases studied

**14** research centers

