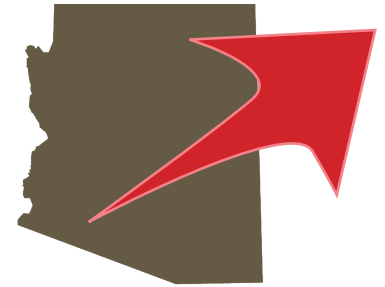


# The Biodesign Institute: Translating research into **REAL-WORLD IMPACT**

**\$291**  
MILLION



## Creating companies and advancing technologies

### **Breezing**

The world's first mobile metabolism tracker

### **ARBSource**

Fast, efficient and modular wastewater treatment

### **Kentucky BioProcessing**

Plant-based pharmaceutical proteins, including Ebola treatment

### **HealthTell**

Diagnostics to detect cancer and other diseases

### **Roche**

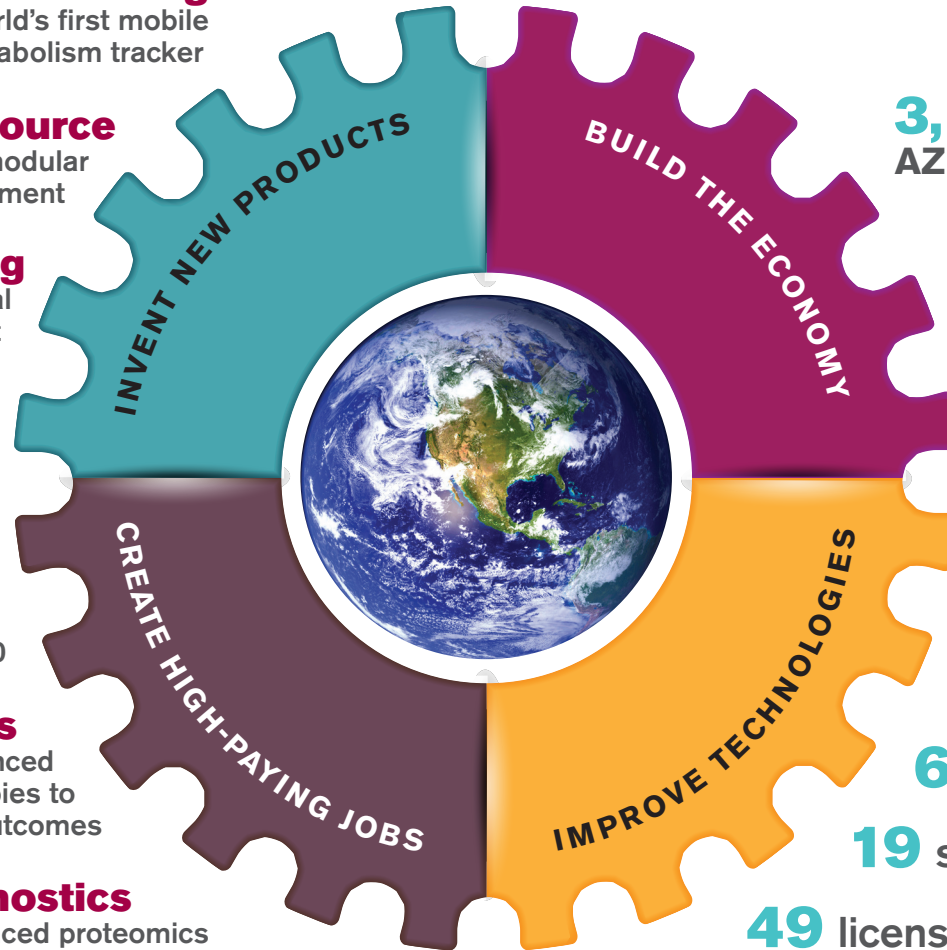
Licensed Biodesign's nanopore technology to decode an individual's complete genome for less than \$1,000

### **Gemneo Biosciences**

Providing physicians with advanced cancer treatments and immunotherapies to improve outcomes

### **Provista Diagnostics**

Licensed Biodesign's advanced proteomics technology creating Videssa, a new blood test to advance breast cancer detection



**3,165**

AZ jobs added yearly

Annual state and local tax revenues

**\$24.1 MILLION**

**15** research centers

**74** patents

**100+** diseases studied

**638** inventions

**19** start-up companies

**49** licensed technologies